

Community College Science (and Engineering) Advisory Board

November 8, 2024

WELCOME!

Newly Proposed BS in Nursing: RN Completion Program

A minimum of 60 semester hours in an associate degree (AAS/AS) nursing program with nursing coursework grades of "C+" or better with a Cumulative GPA of 2.5 or

Required courses for admission:

- Anatomy & Physiology I & II
- Microbiology
- English Composition
- Psychology
- Statistics

Our Proposed BS in Nursing:

Nine Upper Level core courses and one 3 cr UL cognate elective. 60 LA crs 45 UL crs 58 - 62 crs in transfer GE5. NURsing core courses online (or seated).

Unlike other programs, ours is designed from the ground up to be a modern nursing program, following guidelines of the **American Association of Colleges of Nursing's** [*The Essentials: Core Competencies for Professional Nursing Education*](#), in anticipation of CCNE accreditation.

Everyone's two-year degree nursing program will articulate!

SUNY Ulster
 NYSED Code: 01616, Nursing, A.S.

SUNY New Paltz
 NYSED Code: TBD, Nursing, BS

Course#	Course Title	SUNY GER	Major or SUNY Transfer Path	Credits Granted	Course#	Equivalent Course Title	SUNY GER	Major or SUNY Transfer Path	Credits Accepted	
BIO107	Human Anatomy and Physiology I	NSCI	X	4	BIO296	Human Anatomy and Physiology I	NSCI	X	4	
BIO108	Human Anatomy and Physiology II	NSCI	X	4	BIO296	Human Anatomy and Physiology II	NSCI	X	4	
ENG101	College English I	Com Wri		3	ENG160	Composition I	Com WRI		3	
ENG102	College English II	HUM		3	ENG180	Composition II	HUM		3	
NUR152	Fundamentals of Nursing I		X	7	APL000	Fundamentals of Nursing I		X	7	
NUR153	Nursing Dosage Calculations 1		X	1	APL000	Nursing Dosage Calculations 1		X	1	
NUR154	Nursing II		X	8	APL000	Fundamentals of Nursing II		X	8	
NUR252	Nursing III		X	8	APL000	Fundamentals of Nursing III		X	8	
NUR254	Nursing IV		X	9	APL000	Fundamentals of Nursing IV		X	9	
LIB111	Information Literacy		X	1	APL000	Information Literacy		X	1	
MAT110	Quantitative Reasoning	MATH	X	3	MAT143	Math in the Modern World	MATH	X	3	
PSY101	General Psychology	SOC SCI	X	3	PSY101	General Psychology	SOC SCI	X	3	
PSY210	Life Span Development		X	3	PSY241	Lifespan Development		X	3	
GenEd	General Ed elective	DEIJ		3	LAS course	LL LA course	DEIJ		3	
GenEd	General Ed elective	TBD		3	LAS course	LL LA course	GE5		3	
				LA Credits					LA Credits	30
				Total Credits					Total Credits Transferred	63
									Remaining Credits Needed for Graduation after Transfer	58

Everyone's two-year degree nursing program will articulate!

Dutchess Community College
 NYSED Code: 00658, Nursing, A.A.S.

Course#	Course Title	SUNY GER	Major or SUNY Transfer Path	Credits Granted
BIO101	Anatomy and Physiology I	NSCI	X	4
BIO132	Anatomy and Physiology II	NSCI	X	4
BIO212	Microbiology		X	4
ENG101	Composition I	Com Wri		3
ENG102	Composition II	HUM		3
NUR105	Nursing Science I		X	6
NUR107	Survey of Professional Nursing		X	1
NUR112	Nursing Science II		X	8
NUR204	Professional Issues in Nursing		X	1
NUR213	Nursing Science III		X	8
NUR215	Parent-Child Nursing		X	3
NUR216	Nursing Science IV		X	4
NUR218	Nursing Synthesis		X	2
PSY111	Introduction to Psychology	SOC SCI	X	3
PSY203	Developmental Psychology		X	3
BHS103	Social Problems in Today's World	DEIJ	X	3
GenEd	American History	US		3
PED1XX	Physical Education			1
			LA Credits	30
Total Credits				64

SUNY New Paltz
 NYSED Code: TBD, Nursing, BS

Course#	Equivalent Course Title	SUNY GER	Major or SUNY Transfer Path	Credits Accepted
BIO296	Anatomy and Physiology I	NSCI	X	4
BIO296	Anatomy and Physiology II	NSCI	X	4
BIO296	Microbiology for nursing		X	4
ENG170	Rhetoric and Writing	Com WRI		3
ENG180	Composition II	HUM		3
APL000	Nursing Science I		X	6
APL000	Survey of Professional Nursing		X	1
APL000	Nursing Science II		X	8
APL000	Professional Issues in Nursing		X	1
APL000	Nursing Science III		X	8
APL000	Parent-Child Nursing		X	3
APL000	Nursing Science IV		X	4
APL000	Nursing Synthesis		X	2
PSY101	General Psychology	SOC SCI	X	3
PSY241	Lifespan Development		X	3
SOC276	Social Problems in a Global Context	DEIJ	X	3
HIS000	LL LA course		X	3
APL000	PE			1
			LA Credits	30
Total Credits Transferred				64
Remaining Credits Needed for Graduation after Transfer				56

Everyone's two-year degree nursing program will articulate!

Orange Community College NYSED Code: 01501, Nursing, A.A.S.					SUNY New Paltz NYSED Code: TBD, Nursing, BS				
Course#	Course Title	SUNY GER	Major or SUNY Transfer Path	Credits Granted	Course#	Equivalent Course Title	SUNY GER	Major or SUNY Transfer Path	Credits Accepted
BIO111	Anatomy and Physiology I	NSCI	LA	4	BIO296	Anatomy and Physiology I	NSCI	LA, MAJ	4
BIO112	Anatomy and Physiology II	NSCI	LA	4	BIO296	Anatomy and Physiology II	NSCI	LA, MAJ	4
MLT106 or 209	Microbiology for Health Professions (3 crs) or Gen Microbio (4cs)		LA	3	BIO296	Microbiology for Nursing		LA, MAJ	3
ENG101	Freshman English 1		LA	3	ENG160	Rhetoric and Writing	Com WRI	LA, MAJ	3
ENG102	Freshman English 2		LA	3	ENG180	Composition II	HUM	LA, MAJ	3
NUR101	Nursing I: Fundamentals		APL	7	APL000	Nursing I: Fundamentals		APL, MAJ	7
NUR102	Nursing 2: Fundamentals		APL	10	APL000	Nursing 2: Fundamentals		APL, MAJ	10
NUR201	Nursing 3: Caring for the Growing Family		APL	7	APL000	Nursing 3: Caring for the Growing Family		APL, MAJ	7
NUR202	Nursing 4: Physical and Mental Illness		APL	9	APL000	Nursing 4: Physical and Mental Illness		APL, MAJ	9
NUR203	Nursing 5: Transition to Practice		APL	1	APL000	Nursing 5: Transition to Practice		APL, MAJ	1
NUR205	Pharmacology and the Body		APL	3	APL000	Pharmacology and the Body		APL, MAJ	3
PSY111	Introduction to Psychology	SOC SCI	LA	3	PSY101	General Psychology	SOC SCI	LA, MAJ	3
MAT102 or 120 or 121 or higher	Intro Algebra or Intro Stats or College Algebra	MATH	LA	3	MAT120 or 241 or 152	College Math or Intro Stats or College Algebra	MAT	LA, MAJ	3
COM100 GenEd	Oral Communication Social Science	Oral Com Soc SCI	LA	1	CMM202 SOC1xx	Interpersonal Communication Social Science	Oral Com SOC SCI	LA, GE5 LA, GE5	1
			LA Credits	27				LA Credits	27
			Total Credits	64				Total Credits Transferred	64
								Remaining Credits Needed for Graduation after Transfer	56

Everyone's two-year degree nursing program will articulate!

Westchester Community College NYSED Code: 78816, Nursing, A.A.S.					SUNY New Paltz NYSED Code: TBD, Nursing, BS				
Course#	Course Title	SUNY GER	Major or SUNY Transfer Path	Credits Granted	Course#	Equivalent Course Title	SUNY GER	Major or SUNY Transfer Path	Credits Accepted
BIOL 121	Anatomy and Physiology I	NSCI	LA	4	BIO296	Anatomy and Physiology I	NSCI	LA, MAJ	4
BIOL 123	Anatomy and Physiology II	NSCI	LA	4	BIO296	Anatomy and Physiology II	NSCI	LA, MAJ	4
BIOL 221	General Microbiology		LA	3	BIO296	Microbiology		LA, MAJ	3
ENG101	Writing and Research		LA	3	ENG160	Composition I		LA, MAJ	3
ADN 120	Nursing I: Fundamentals of Nursing		APL	8	APL000	Nursing I: Fundamentals of Nursing		APL, MAJ	8
ADN 102	Dosage Calculations for Nurses		APL	1	APL000	Dosage Calculations for Nurses		APL, MAJ	1
ADN 131	Nursing 2: Mental Health and Maternity Nursing		APL	8	APL000	Nursing 2: Mental Health and Maternity Nursing		APL, MAJ	8
ADN 221	Nursing 3: Lab and Clinical Study		APL	8	APL000	Nursing 3: Lab and Clinical Study		APL, MAJ	8
ADN 231	Nursing 4: Clinical Study		APL	12	APL000	Nursing 4: Clinical Study		APL, MAJ	12
NUTR 109	Nutrition for Health Care		APL	3	APL000	Nutrition for Health Care			3
BIOL 202	Pharmacology for Nurses		APL	3	ELT000	Pharmacology for Nurses		APL, MAJ	3
PSYH 101	Introduction to Psychology	SOC SCI	LA	3	PSY101	General Psychology	SOC SCI	LA, MAJ	3
MAT117	College Quantitative Reasoning	MATH	LA	3	MAT001	College Quantitative Reasoning		LA, MAJ	3
			LA Credits	20				LA Credits	20
			Total Credits	63				Total Credits Transferred	63
								Remaining Credits Needed for Graduation after Transfer	57

Everyone's two-year degree nursing program will articulate!

SUNY Rockland
HEGIS Code: 5208, Nursing, A.S.

SUNY New Paltz
NYSED Code: TBD, Nursing, BS

Course#	Course Title	SUNY GER	Major or SUNY Transfer Path	Credits Granted	Course#	Equivalent Course Title	SUNY GER	Major or SUNY Transfer Path	Credits Accepted	
BIO11000	Anatomy and Physiology I	NSCI	X	4	BIO296	Human Anatomy and Physiology I	NSCI	X	4	
BIO11100	Anatomy and Physiology II	NSCI	X	4	BIO296	Human Anatomy and Physiology II	NSCI	X	4	
BIO20700	Microbiology		X	4	BIO296	Microbiol		X	4	
ENG10100	College Writing I	Com Wri	X	3	ENG160	Composition I	Com WRI	X	3	
ENG10200	College Writing II	HUM	X	3	ENG180	Composition II	HUM	X	3	
NUR11600	Nursing Fundamentals I		X	3.5	APL000	Nursing Fundamentals I		X	3.5	
NUR11800	Nursing Fundamentals II		X	3.5	APL000	Nursing Fundamentals II		X	3.5	
NUR14400	Intro Adult Health/Mental health		X	3.5	APL000	Intro Adult Health/Mental health		X	3.5	
NUR14600	Adult Health I		X	3.5	APL000	Adult Health I		X	3.5	
NUR22400	Maternal Child Helath		X	3.5	APL000	Maternal Child Helath		X	3.5	
NUR22600	Adult Health II		X	3.5	APL000	Adult Health II		X	3.5	
NUR25200	Adult Health III		X	3.5	APL000	Adult Health III			3.5	
NUR25400	Transition to Professional Practice		X	2.5	APL000	Transition to Professional Practice			2.5	
NUR14900	NCLEX Review		X	0	APL000	NCLEX Review			0	
CST10100	Intro to Public Speaking		X	3	APL000	Intro to Public Speaking		X	3	
MAT12500	Statistics	MATH	X	3	MAT240	Intro Statistics	MATH	X	3	
PSY10110	Intro Psychology	SOC SCI	X	3	PSY101	General Psychology	SOC SCI	X	3	
PSY20300	Developmental Psych		X	3	PSY241	Lifespan Development		X	3	
GenEd	General Ed elective	DEIJ		3	LAS course	LL LA course	DEIJ		3	
GenEd	General Ed elective	ART/US/ World/ Frgn Lang		3	LAS course	LL LA course	ART/US/ World/ Frgn Lang		3	
				LA Credits					36	
				Total Credits					63	
						Total Credits Transferred				63
						Remaining Credits Needed for Graduation after Transfer				57

Everyone's two-year degree nursing program will articulate!

Columbia-Greene Community College NYSED Code: 0622, Nursing, A.S.					SUNY New Paltz NYSED Code: TBD, Nursing, BS				
Course#	Course Title	SUNY GER	Major or SUNY Transfer Path	Credits Granted	Course#	Equivalent Course Title	SUNY GER	Major or SUNY Transfer Path	Credits Accepted
BI 130	Anatomy and Physiology I	NSCI	X	4	BIO296	Anatomy and Physiology I	NSCI	X	4
BI 131	Anatomy and Physiology II	NSCI	X	4	BIO296	Anatomy and Physiology II	NSCI	X	4
BI 210	General Microbiology		X	4	BIO350	General Microbiology		X	4
EN 101	Composition	Com Wri		3	ENG170	Rhetoric and Writing	Com WRI		3
EN 102	Composition and Literature	HUM		3	ENG180	Composition II	HUM		3
NU 101	Nursing I		X	7	APL000	Nursing Science I		X	7
NU 102	Nursing II		X	7	APL000	Survey of Professional Nursing		X	7
NU 201	Nursing III		X	10	APL000	Nursing Science II		X	10
NU 202	Nursing IV		X	10	APL000	Professional Issues in Nursing		X	10
PY 101	General Psychology	SOC SCI	X	3	PSY101	General Psychology	SOC SCI	X	3
PY 201	Lifespan Development		X	3	PSY241	Lifespan Development		X	3
SO 101	Introduction to Sociology	DEIJ	X	3	SOC101	Introduction to Sociology		X	3
MA 102	Statistics	MAT	X	3	MAT241	Intro Statistics	MAT	X	3
			LA Credits	30				LA Credits	30
			Total Credits	64				Total Credits Transferred	64
								Remaining Credits Needed for Graduation after Transfer	56

Everyone's two-year degree nursing program will articulate!

Hudson Valley Community College NYSED Code: 00952, Nursing, A.A.S.					SUNY New Paltz NYSED Code: TBD, Nursing, BS				
Course#	Course Title	SUNY GER	Major or SUNY Transfer Path	Credits Granted	Course#	Equivalent Course Title	SUNY GER	Major or SUNY Transfer Path	Credits Accepted
BIOL 270	Anatomy and Physiology I	NSCI	LA	4	BIO296	Anatomy and Physiology I	NSCI	LA, MAJ	4
BIOL 271	Anatomy and Physiology II	NSCI	LA	4	BIO296	Anatomy and Physiology II	NSCI	LA, MAJ	4
BIOL 205	Microbiology		LA	4	BIO350	General Microbiology		LA, MAJ	4
ENGL 101	English Composition	Com Wri	LA	3	ENG170	Rhetoric and Writing	Com WRI	LA, MAJ	3
CMHL 115	Health Care Ethics	DEISJ	APL	3	APL000	Health Care Ethics	DEISJ	APL, MAJ	3
NURS 100	Foundations of Nursing		APL	1	APL000	Foundations of Nursing		APL, MAJ	1
NURS 101	Nursing I		APL	4	APL000	Nursing I		APL, MAJ	4
NURS 102	Nursing II		APL	6	APL000	Nursing II			6
NURS 105	Bridging Education and Practice Simulation I		APL	1	APL000	Bridging Education and Practice Simulation I		APL, MAJ	1
NURS 106	Bridging Education and Practice Simulation II		APL	1	APL000	Bridging Education and Practice Simulation II		APL, MAJ	1
NURS 115	Pharmacology		APL	3	APL000	Pharmacology		APL, MAJ	3
NURS 201	Nursing III		APL	10	APL000	Nursing III		APL, MAJ	10
NURS 202	Nursing IV		APL	9	APL000	Nursing IV		APL, MAJ	9
NURS 205	Bridging Education and Practice Simulation III		APL	1	APL000	Bridging Education and Practice Simulation III		APL, MAJ	1
NURS 206	Bridging Education and Practice Simulation IV		APL	1	APL000	Bridging Education and Practice Simulation IV		APL, MAJ	1
PSYC 100	General Psychology	SOC SCI	LA	3	PSY101	General Psychology	SOC SCI	LA, MAJ	3
PSYC 205	Developmental Psychology		LA	3	PSY241	Lifespan Development		LA, MAJ	3
MATH 132	Math for Health Science	MAT/QR	LA	4	MAT196	Math for Health Science	MAT/QR	LA	4
			LA Credits	25				LA Credits	25
			Total Credits	65				Total Credits Transferred	65
								Remaining Credits Needed for Graduation after Transfer	55

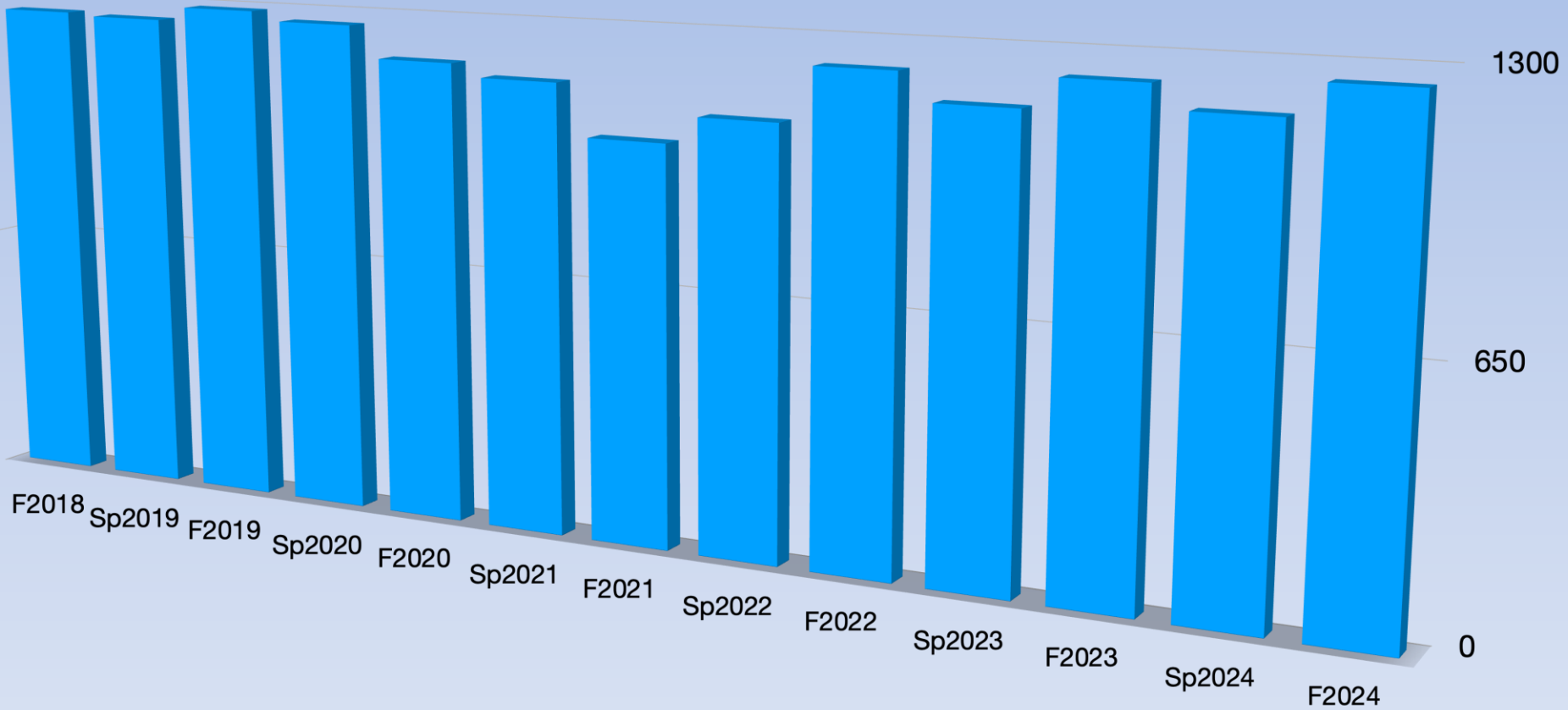
Sullivan County Community College
 NYSED Code: 85021, Nursing, A.A.S.

SUNY New Paltz
 NYSED Code: TBD, Nursing, BS

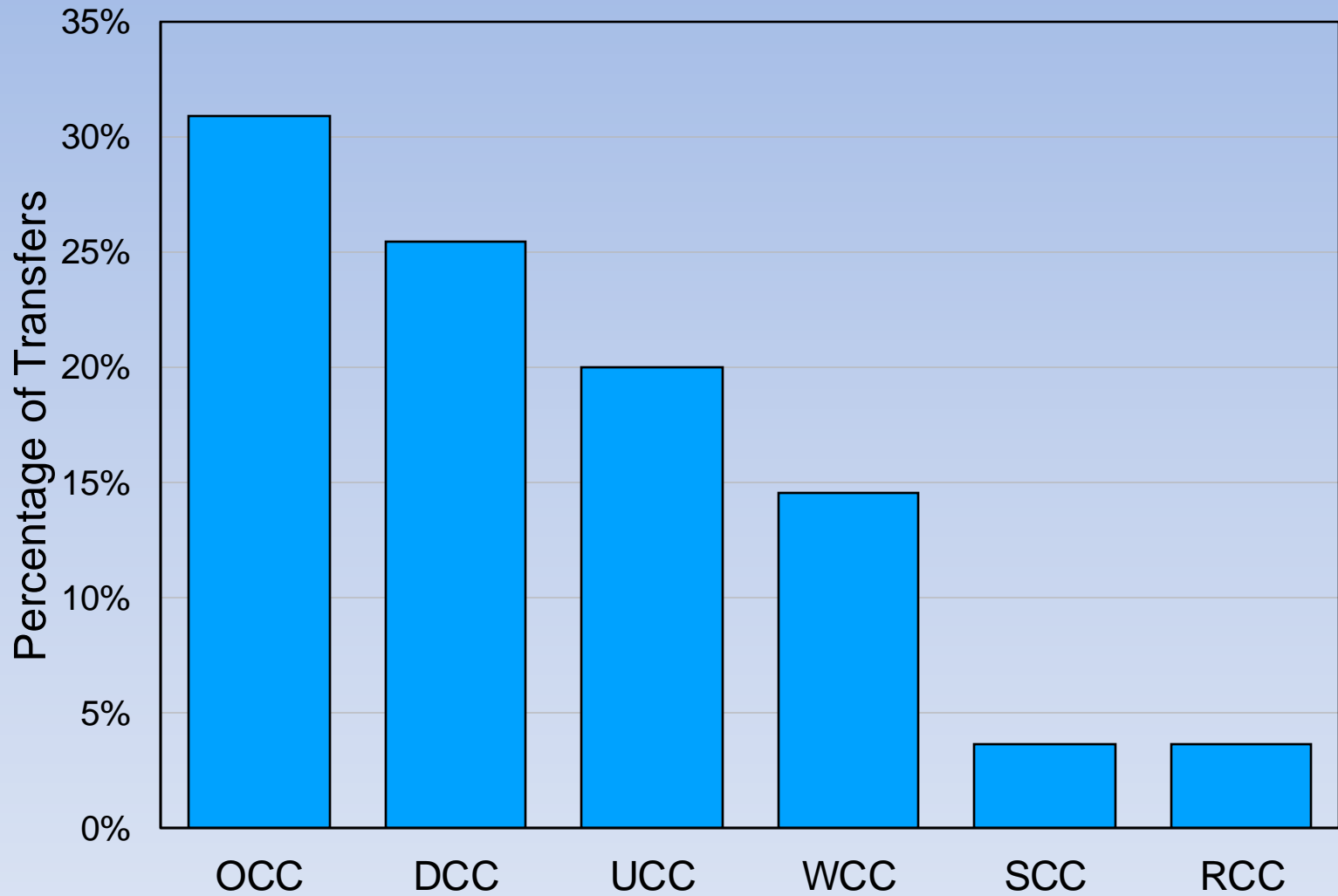
Course#	Course Title	SUNY GER	Major or SUNY Transfer Path	Credits Granted	Course#	Equivalent Course Title	SUNY GER	Major or SUNY Transfer Path	Credits Accepted
SCI 2124	Human Anatomy and Physiology I	NSCI	LA	4	BIO296	Anatomy and Physiology I	NSCI	LA, MAJ	4
SCI 2126	Human Anatomy and Physiology II	NSCI	LA	4	BIO296	Anatomy and Physiology II	NSCI	LA, MAJ	4
SCI 2113	Microbiology	NSCI	LA	4	BIO296	Microbiology for Nursing		LA, MAJ	4
ENG 1001	Composition 1	Comp WRI	LA	3	ENG160	Composition 1	Com WRI	LA, MAJ	3
NUR 1001	Fundamentals of Nursing I		APL	8	APL000	Fundamentals of Nursing I		APL, MAJ	8
NUR 1002	Commonalities in Nursing Care		APL	8	APL000	Commonalities in Nursing Care		APL, MAJ	8
NUR 1015	Clinical Calculations (optional)				APL000	Clinical Calculations (optional)		APL	0
NUR 2020	Health Problems Throughout the Life Cycle I		APL	8	APL000	Health Problems Throughout the Life Cycle I		APL, MAJ	8
NUR 2050	Pharmacology and the Human Body		APL	3	APL000	Pharmacology and the Human Body		APL, MAJ	3
NUR 2030	Health Problems Throughout the Life Cycle I		APL	8	APL000	Health Problems Throughout the Life Cycle I		APL, MAJ	8
NUR 2100	Nursing Issues and Trends		APL	2	APL000	Nursing Issues and Trends		APL, MAJ	2
PSY 1500	General Psychology	SOC SCI	LA	3	PSY101	General Psychology	SOC SCI	LA, MAJ	3
MAT1004	Elementary Stats	MATH	LA	3	MAT241	Intro Stats	MAT	LA, MAJ	3
PSY 2510	Developmental Psychology	SOC SCI	LA	3	PSY241	Lifespan Developmental		LA, GE5	3
SOC 1600	Intro to Sociology	SOC SCI	LA	3	SOC101	Intro to Sociology	SOC SCI	LA, GE5	3
			LA Credits	27				LA Credits	27
			Total Credits	64				Total Credits Transferred	64
								Remaining Credits Needed for Graduation after Transfer	56

Recovering from COVID

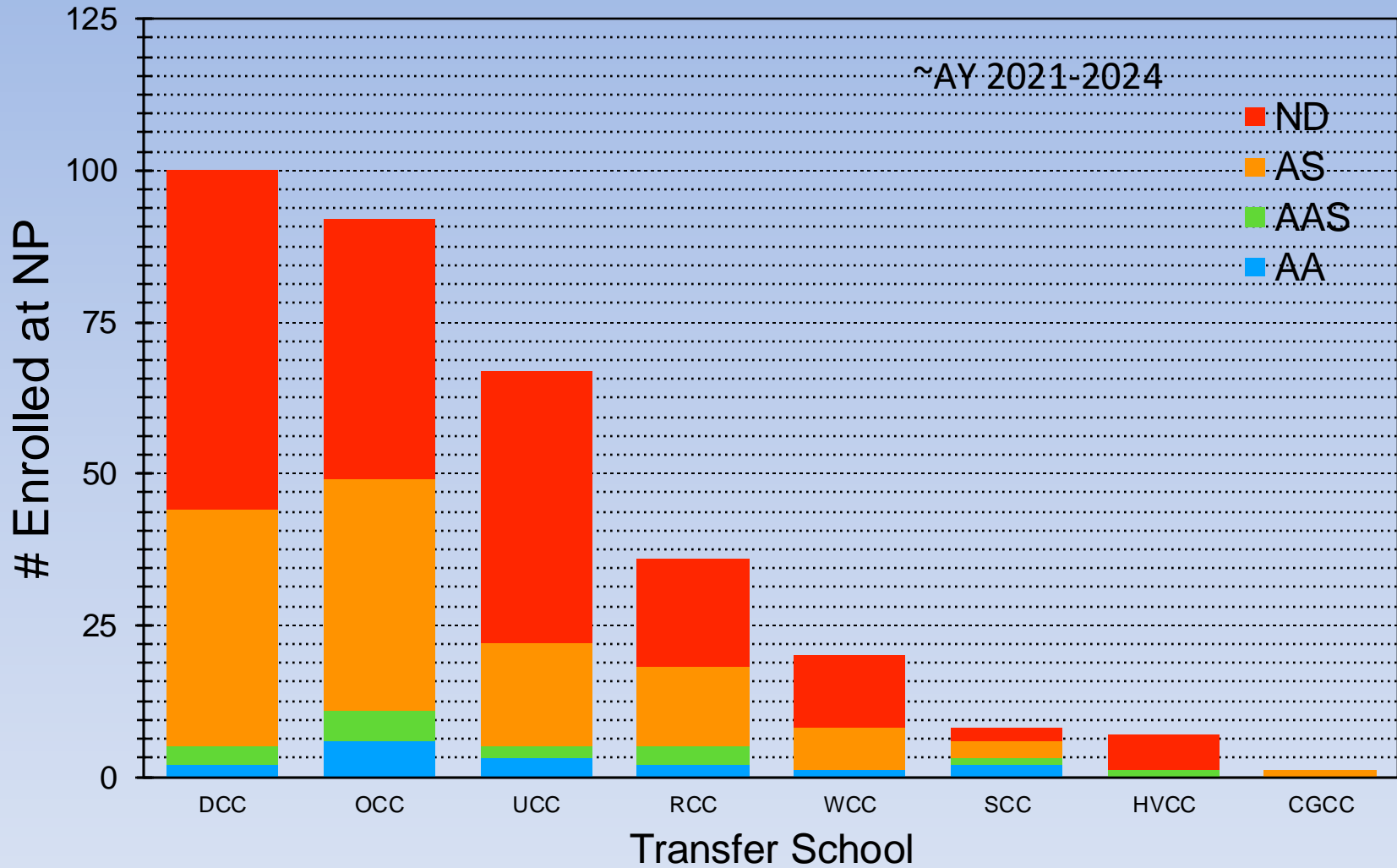
Total SSE Enrollments



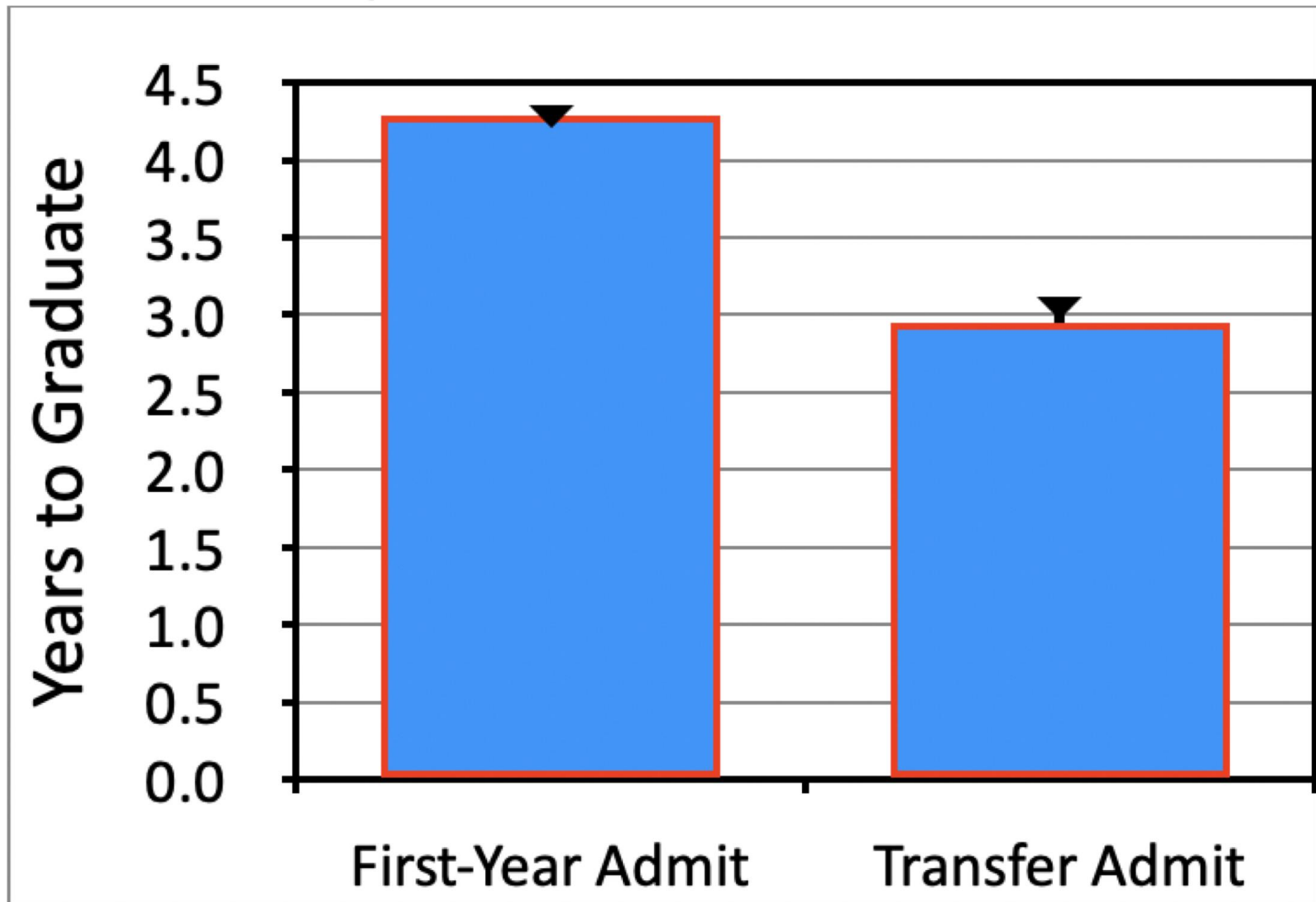
Transfers as of Fall 2024



Two-year Degrees of Transfers, Fall 2024

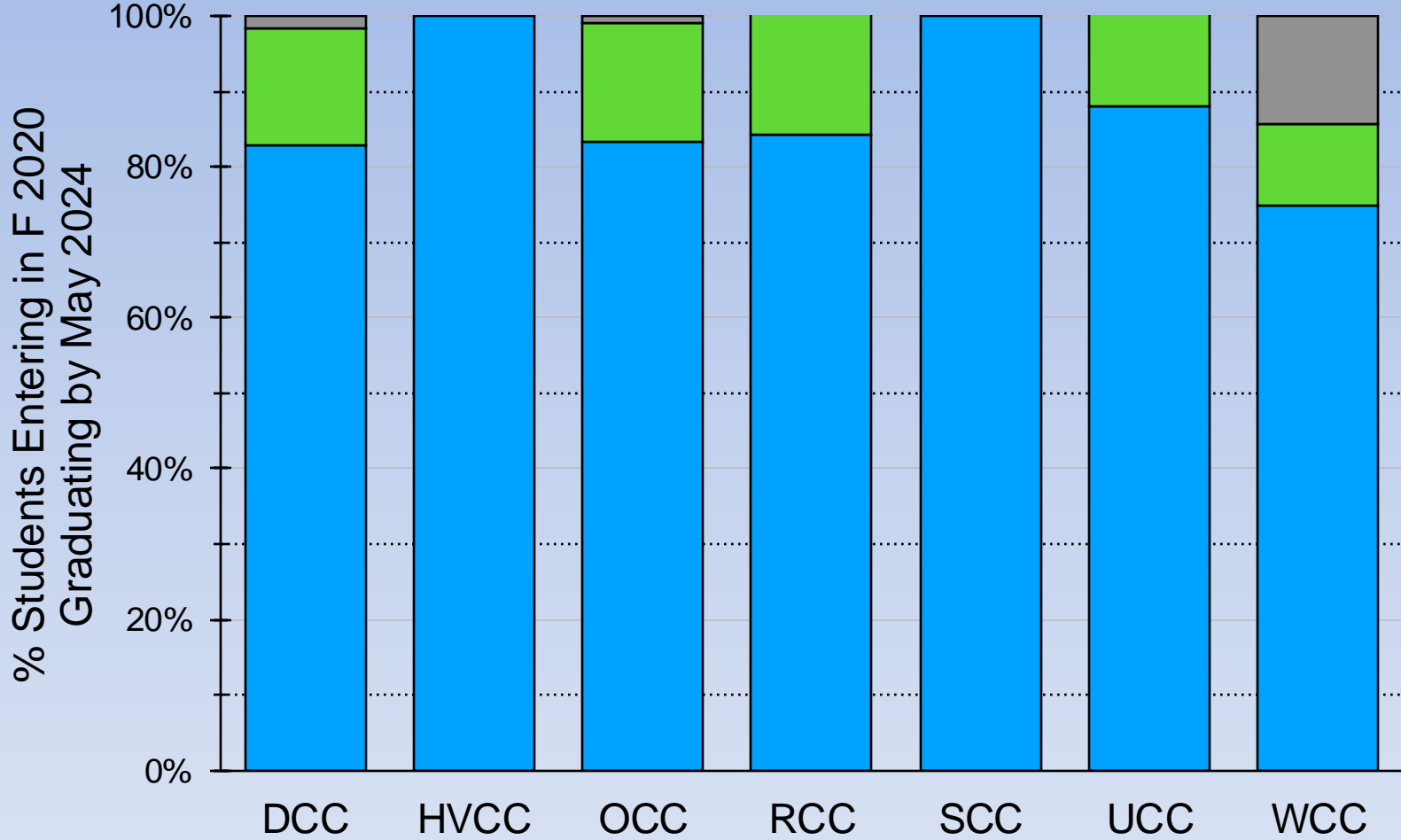


SSE Degrees Awarded from 2012 to 2020



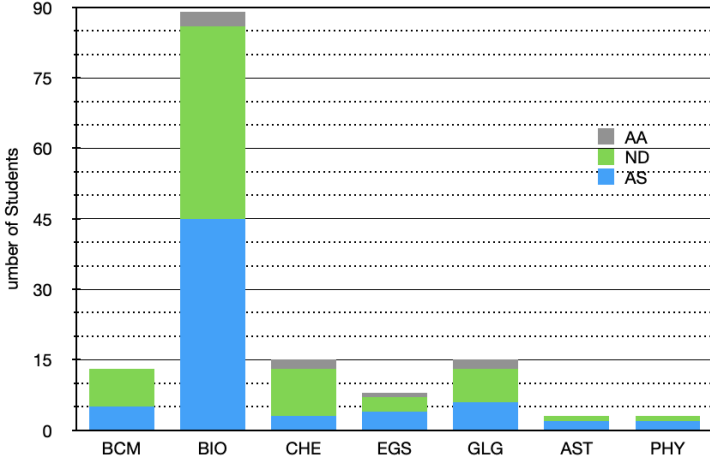
Six Semester Graduation Rate

- %Grad 6 Sems
- %Enr 7th Sem
- %Dropped

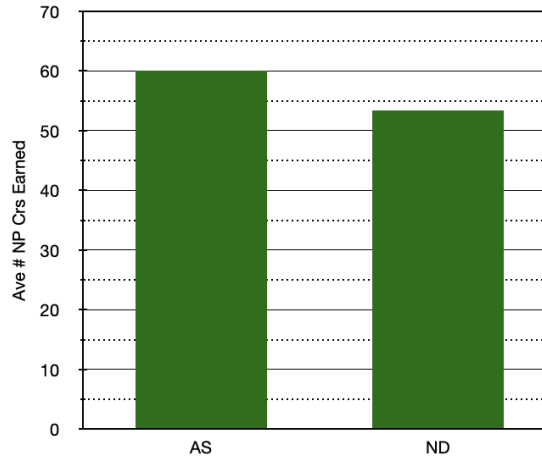


Consequences of Finishing the AS Before Transfer

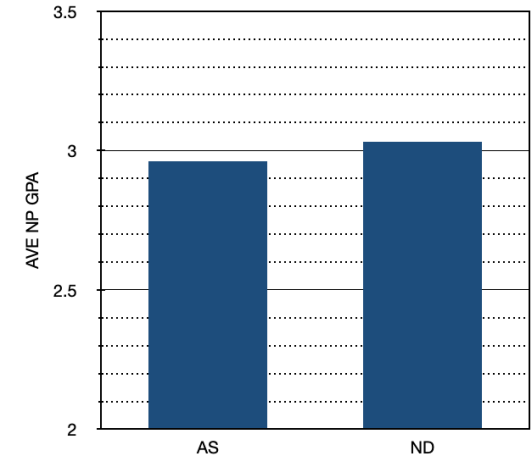
NP Major vs Degree of Transfers from DCC



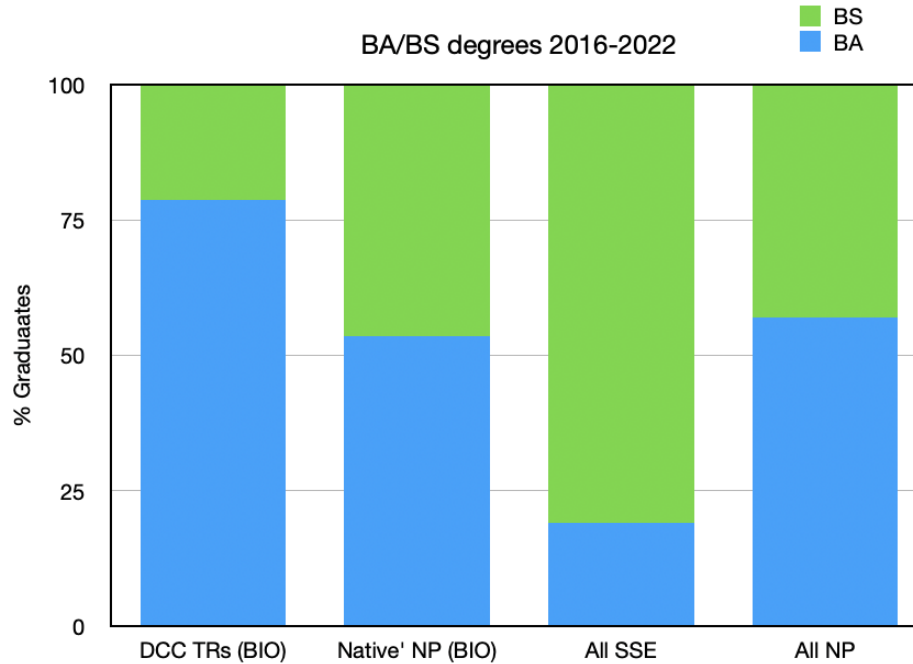
Ave # NP Crs



Ave NP GPA



BA/BS degrees 2016-2022



Articulated Dual-degree STEM Programs

Proposed Draft Articulation for Biology (BA)

DCC	NP	#crs
BIO105*	BIO201/211	4
BIO106*	BIO202/212	4
BIO205*	BIO320/321	4
BIO214	BIO340	4
BIO207	BIO328	4
CHE121*	CHE201/211	4
CHE122*	CHE202/212	4 → 28
~~~~~core		
BIO231	BIO307	4
BIO232	BIO370	4 → 8 <u>prehealth, BA</u>
~~~~~		
MAT185	MAT181	3
MAT stats	MAT241	3
PHY1 (non calc)	PHY221/236	4 → 7 to 12
~~~~~		
SCI100*	N0001	1
ENG101*	ENG160	3
ENG102*	ENG170	4
GE5	GE5	9 to 12
WFE101*	N0001	3
BHS103*	GE	3 → 23 to 26 40 to 66

## Proposed Draft Articulation for Biology (BS)

DCC	NP	#crs
BIO105*	BIO201/211	4
BIO106*	BIO202/212	4
BIO205*	BIO320/321	4
BIO214	BIO340	4
BIO207	BIO328	4
CHE121*	CHE201/211	4
CHE122*	CHE202/212	4 → 28
~~~~~core		
BIO231	BIO307	4
BIO232	BIO370	4 → 8 <u>prehealth, BA</u>
~~~~~		
CHE231	CHE309/316	4*
or		
PHY 1 (calc)	PHY201/211	4 BS*
MAT185	MAT181	3
MAT221	MAT251	4
~~~~~		
SCI100*	N0001	1
ENG101*	ENG160	3
ENG102*	ENG170	4
GE5	GE5	9 to 12
WFE101*	N0001	3
BHS103*	GE	3 → 23 to 26 40 to 66



The State University
of New York



SUNY TRANSFER / TRANSFER TASK FORCE

Transfer Task Force Report

At the direction of the Chancellor and the SUNY Board of Trustees, the [Office of Student Success](#) and the [Office of the Provost](#) partnered with the leaders of the [University Faculty Senate](#) and [Faculty Council of Community Colleges](#) to establish a Transfer Task Force charged with evaluating the SUNY-wide transfer landscape. The Task Force was designed to be an inclusive body that could draw on the collective expertise of the entire SUNY System. In all, over 100 individuals participated in the process - ranging from participating on working groups, subgroups, to participating in the Task Force's various outreach efforts including surveys, campus visits, ad hoc groups, and listening sessions.

The Task Force began its work in fall 2023, and assessed SUNY's policies, procedures and programs alongside emerging and prevailing national models to devise a next-generation approach to supporting transfer students and improving student outcomes.

Review the Report Recommendations

The report provides 32 specific recommendations that are thematically organized into 4 overarching objectives. Proposals are designed to provide additional support and clarity for students, faculty and staff across the SUNY System. Please click on an objective to explore the report recommendations and related materials.

[Objective I: Maximize Credit Acceptance and Major Applicability](#)

[Objective II: Provide Clarity, Transparency and Consistency in Transfer Process and Policy](#)

[Objective III: Provide Additional System-Wide Resources](#)

[Objective IV: Foster System-Wide Transfer Partnerships](#)

Download the Full Report

In addition to the online version of the report, you are able to download the full report, which includes the executive summary and an appendix of tables and reference materials.

[Full Transfer Task Force Report](#) (PDF)

Open Comment Period

The Transfer Task Force welcomes comments during the 30-day open comment period. During this time, all members of the SUNY community and the public are welcome to provide feedback using the [online comment form](#) (through November 25, 2024).

▶ **2.1 Create a Comprehensive SUNY Transfer Support and Transition Portal**

▶ **2.2 Establish a Common Admission and Transition Checklist**

▶ **2.3 Cultivate Accompanying Prospect-to-Graduate Support Models**

CLARITY AND TRANSPARENCY IN POLICIES AND STANDARDS

Many of the SUNY transfer policies in place are not well-known to faculty, staff and students. For example, a recent survey of campus materials showed that many campuses do not provide online guidance regarding the student’s right to appeal transfer decisions, almost a quarter did not discuss SUNY Transfer Paths, and the GETA was publicized and described on only a minority of campus sites.^{1,2} SUNY will provide greater visibility for policies and their benefits by publicizing them on SUNY and campus websites, communications, literature, and advertising. This will give students, faculty, and staff a better view of the advantages afforded by the policies and make the policies more pervasive and front-of-mind. The following recommendations aim to make transfer policy clear to students, faculty and staff by creating greater visibility using straightforward guidance and materials.

¹ Performed July 2024. ² Task Force campus site review – May 2024

▶ **2.4 Create a “Transfer Student Bill of Rights”**

▶ **2.5 Provide Additional Financial Aid and Tuition/Cost Guidance**

▶ **2.6 Increase Awareness of Policies for Faculty and Staff**

▼ **2.7 Redesign the Transfer Appeal and Issue Resolution Processes**

▼ 2.7 Redesign the Transfer Appeal and Issue Resolution Processes

DISCUSSION

When courses or credits do not transfer, or if a student believes they have not transferred properly, [SUNY provides a means for students to appeal to SUNY System Administration](#), after they exhaust a campus appeal process. The multiple steps and requirements currently required is an unclear and lengthy process, and the burden of the appeal is entirely on a student. The level of support and direction that a student receives will vary from campus to campus, and many campuses do not list appeals as an option or have a formal process detailed in policy. These experiences suggest that publicizing the process and creating an abridged and visible resource that can connect students with campus staff may lead to better outcomes. Because campuses are responsive and amenable to reviewing these cases, by having a central tool where an advocate can assist, resolutions can be speedier, constructive, and more straightforward.

RECOMMENDATION

SUNY will create a central resolution / appeal tool that guides a student through the process. The resulting centralized tool will allow students to progress through an appeal using a step-by-step guide which bridges the student, SUNY and the campus. Support personnel at SUNY will ensure the student connects directly with the proper resources and advisors to exhaust their options prior to a full appeal. To achieve this, the Curriculum and Transfer Pathways working group advocated for exploring successful current models in other academic appeal cases, such as the approach used by [NC-SARA](#). By providing a means to structure these interactions and in creating an environment for dialog and advocacy, student appeal outcomes and issue resolutions are likely to improve.

Objective IV

Foster System-Wide Transfer Partnerships

To be successful as a system, and to best support all campuses, people, and regions they serve, SUNY is endeavoring to introduce extensive, comprehensive and meaningful change in transfer and student mobility practices. Key to achieving these goals is having the commitment and involvement of all campuses. SUNY should work with all stakeholders to be assured there is common understanding of shared goals to improving transfer outcomes and the experiences of students.

To this end, The Steering Committee is proposing a model to foster a meaningful system of governance and engagement with a community of professionals that emphasizes shared accountability and responsibility to students. Recommended governance and support models are designed to help all campuses set goals, monitor progress, receive support and have clear guidance.

CAMPUS PROFILES AND KEY PERSONNEL

Transfer support is not limited to individuals with specific titles or roles. Key individuals, policymakers and advocates exist in all areas of the University. Because of the breadth of expertise and the diversity of roles and expertise, it's important to be assured we establish a means to understand who the key stakeholders and contributors to campus success are SUNY-wide. The proposed Academic Advising Network will help to create a platform for disseminating information and receiving valuable feedback, but it may not encompass technical, record-keeping, research or policy professionals and faculty who are integral to the process. The following roles are projected to be added to the DTP-approved and Office of Student Success authored Campus Profile project, which collects key campus leaders and other information such as college calendars, registration times, and critical policies.

► 4.1 Identify Campus-Level Transfer Officers

► 4.2 Identify FERPA Compliance Leads

STRUCTURE, STANDING BODIES AND ADVISORY GROUPS

Key to supporting new and evolving approaches to transfer support, is having a dedicated group of actors committed to sustaining and enhancing transfer services. The Transfer Task Force Steering Committee has proposed a governance and advisory structure that will draw on the expertise of various professional areas and include members from all regions and sectors. Given the meaningful work of the Transfer Task Force, the proposed governance borrows heavily from the cross-functional approaches used there and seeks to integrate former groups, such as the Student Mobility Steering Committee (SMSC), who served as a lead body for most transfer initiatives. The following proposed structure outlines an enhanced and more inclusive group of stakeholders.

▶ **4.3 Establish the Transfer Advisory Council**

▶ **4.4 Establish Standing Subcommittees of the Transfer Advisory Council**

▶ **4.5 Establish the Support Mission of the Transfer and Articulation Office**

HHMI Grant

Megan Ferguson, Ph.D., Associate Professor, Chemistry, SUNY New Paltz
Jennifer Kurtz, Director, Math and Science Center, SUNY Dutchess

Thank You!

Questions and Comments?